

20ms Strobe , 120VAC



Light Engine is a world renowned manufacturer providing the highest quality OEM/ODM services to customers around the world. Working with major international brands, as well as smaller regional ones, Light Engine has an impressive record of partnership with companies large and small for over 40 years.

Light Engine's advanced LED Strobe technology provides an efficient and cost effective way to meet the various Fire and Mass Notification international standards including, but not limited to, NFPA, UL, EN, as well as North American requirements of ADAAG (ADA Accessibility Guidelines) for equal facilitation for the hearing impaired.

Our 120V strobe is designed with flexibility in mind. UL Listed, and meeting all applicable local safety requirements, the 120V strobe can be used as a stand-alone device, or connected to an applicable smoke or gas detector allowing for visual recognition of a trouble condition. The unit is supplied with a quick connect (connector with #18 AWG wiring), or upon request, a 3 wire terminal connection option. If using the 120V strobe with a listed smoke or gas detector, the unit must first undergo 3rd party compatibility testing to ensure local safety compliance requirements are met.



Features

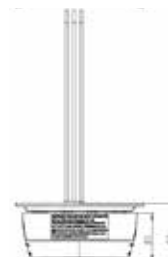
- Meets or exceeds the following Underwriters Laboratories (UL) safety requirements: UL1971, UL1638 and ULC-S526
- 20ms pulse duration to meet the new requirement of NFPA 72 Chapter 18
- Low Current draw
- Utilizes five (5) high power, cool white LEDs
- Flexible optic design to meet or exceed the ideal light output on vertical and horizontal dispersion (Patent pending)
- 4 Flash Patterns: Smoke, CO, Natural gas, and Test

Product Details

Model	LEDSL06-MB-WM
Housing	Fire retardant materials used
Housing Color	Red or White, other colors available upon request
Light Source & Color	Five (5) high power, cool white LEDs
Pulse Duration	20ms
Light Output	177 candela minimum (UL1971, ULC-S526)
Flash Patterns	Smoke, CO, Natural gas, and Test
Input Current	630mA
Flash Rate	1 - 2 Hz
Operating Voltage	100VAC to 140VAC
Synchronize	Customized synchronization feature upon customer's specification
Mounting Options	Standard 4" x 4" back box
Dimension	155mm (L) x 135mm (W) x 62mm (D)
Compliance	UL1971, UL1638, ULC-S526
Wiring	3-wire type
Quick Connection	Connector with #18 AWG wires

Technical Drawings

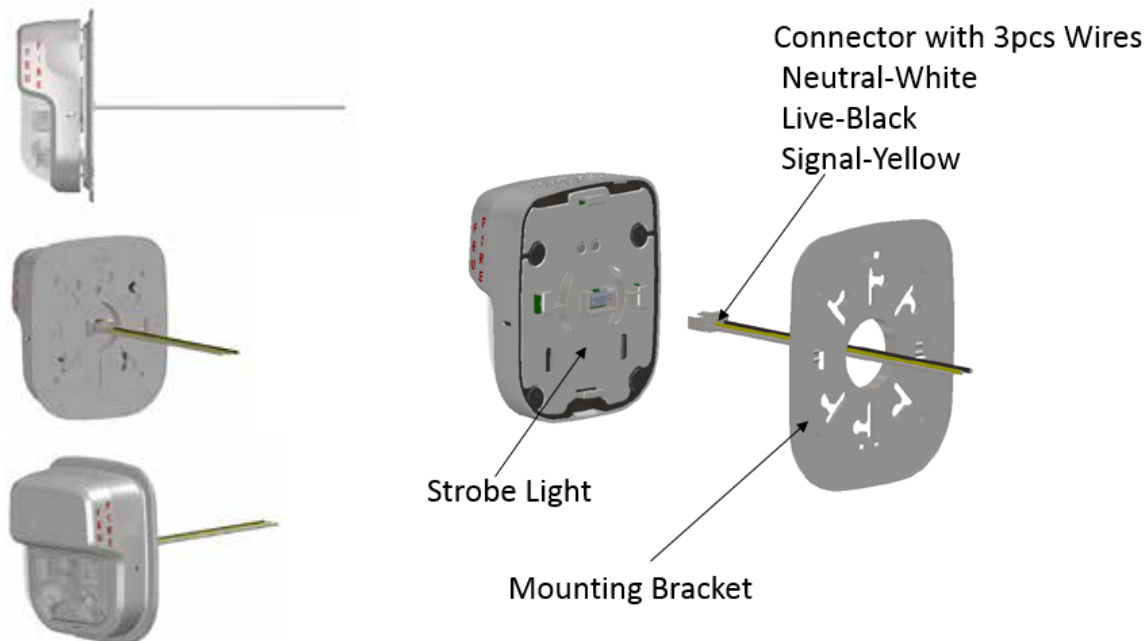
Length	Width	Depth
155 mm	135 mm	62 mm



20ms Strobe , 120VAC



Outlook

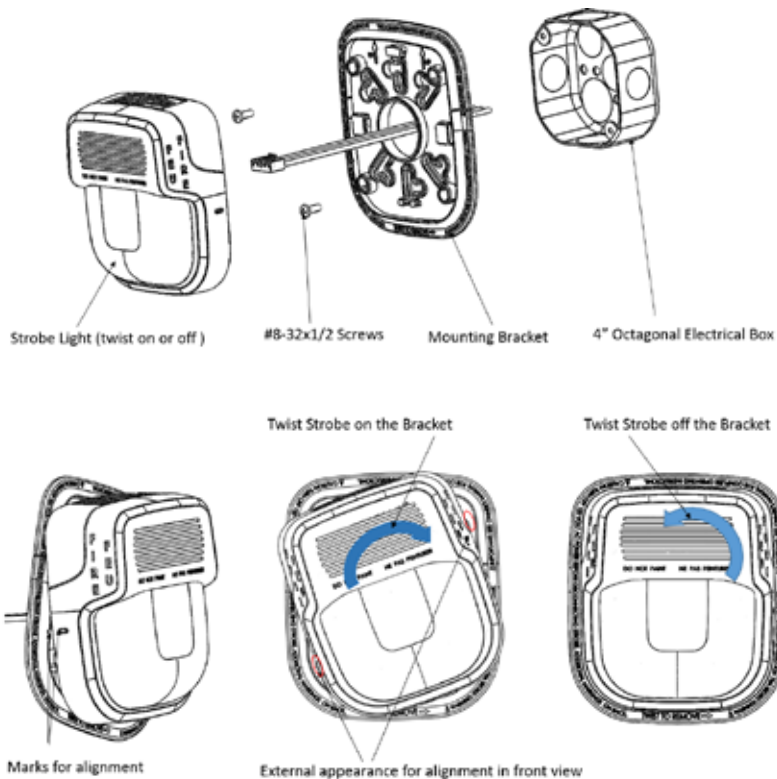


LED STROBE SERIES 5

Mounting Box Options and Installation

Wall Mount Applications

- 4" Octagonal Electrical Box
- Standard 4" x 4" Electrical Box



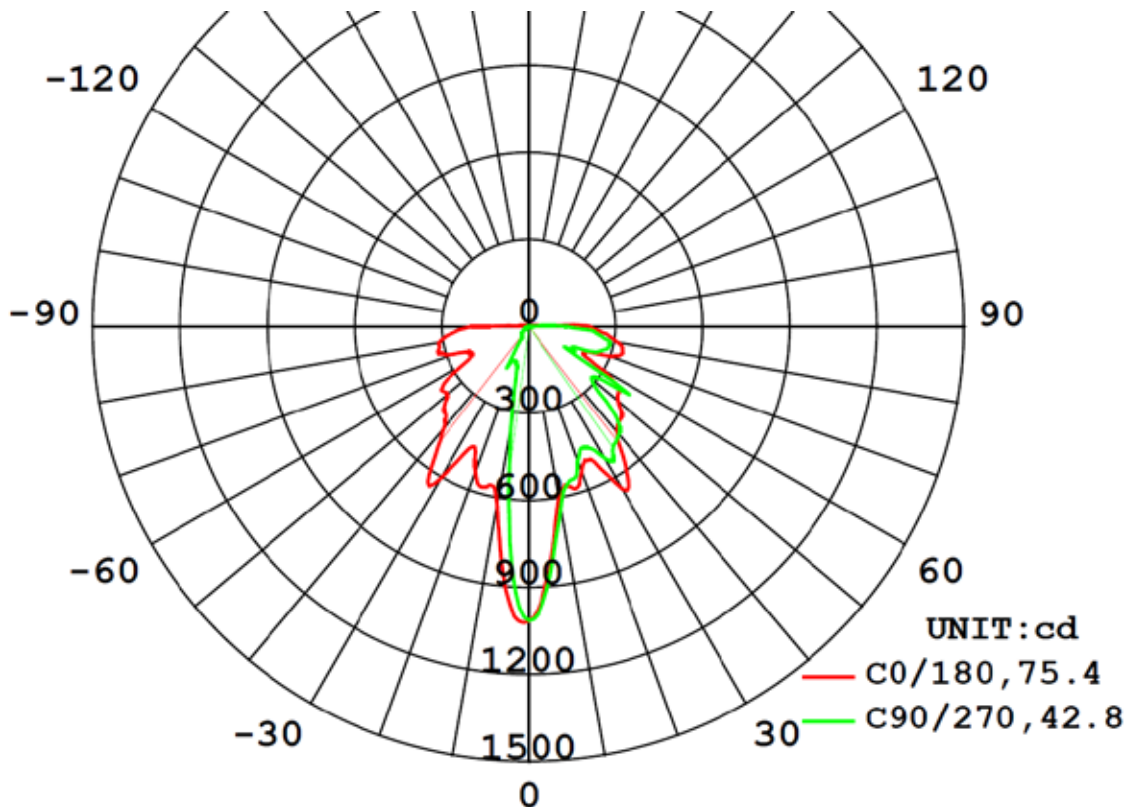
20ms Strobe , 120VAC



Photometry Characteristics

Candela rating

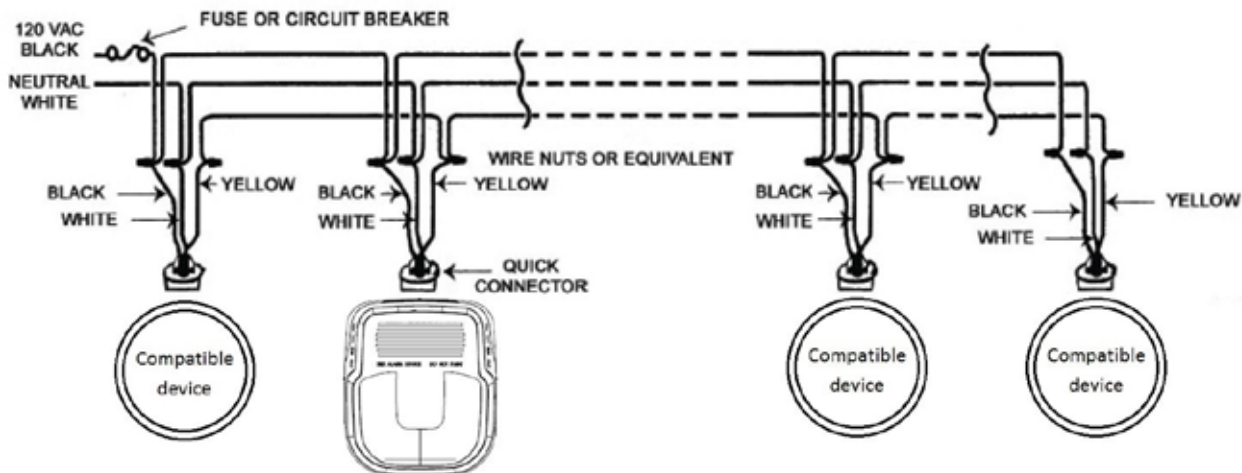
177cd



LED STROBE SERIES 5

Optical Distribution Pattern (Values are not relevant)

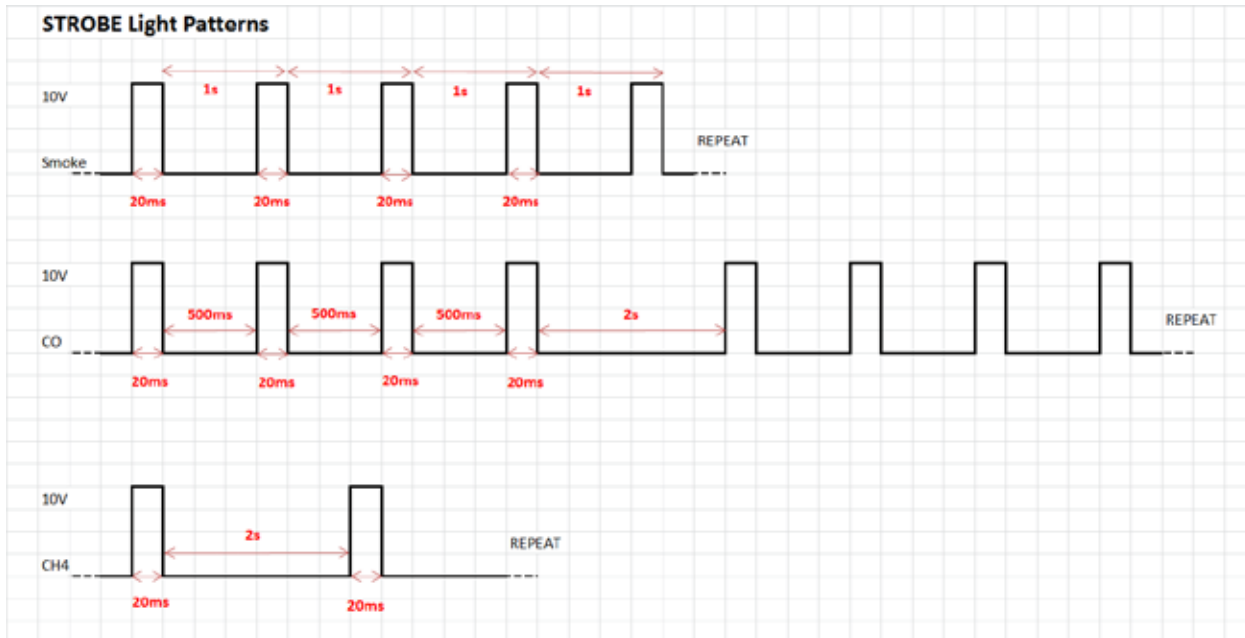
Wiring Diagram



20ms Strobe , 120VAC



Flash Patterns	
Smoke	Steady Flash every second
CO	Quick flashes, 2 second pause, repeating
Gas	Steady flashes, every 2 seconds



LED STROBE SERIES 5